

AU-132MHD

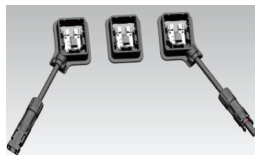
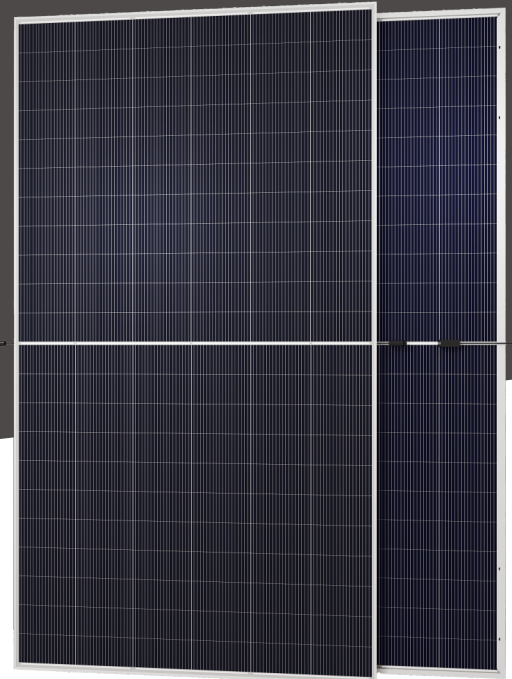
Topcon Technology

POWER RANGE

670W~705W

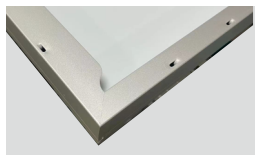
CELL SIZE

210*105mm



JUNCTION BOX

Waterproof protection grade: IP68
Safety Level: Class II
Maximum System Voltage: 1500V
outstanding waterproof level ·
Effectively resist harsh environments



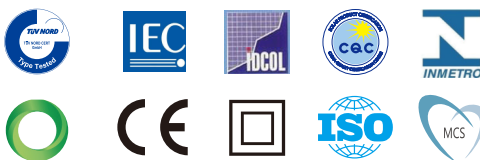
Frame

Strong mechanical load
resistance up to 5400Pa
Anodic oxidation layer resistant to
chemical corrosion available
in silver and black



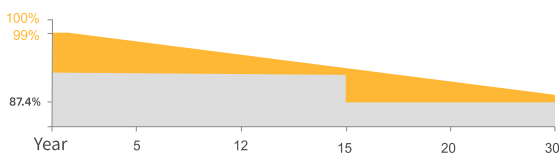
18BB

QUALIFICATIONS AND CERTIFICATES



· IEC61215 / · IEC61730

WARRANTY



15 YEARS Guarantee on product material and workmanship

30 YEARS Linear Power output warranty



SMBB Technology

Better light trapping and current collection to improve module power output and reliability.



PID Resistance

Excellent Anti-PID performance guarantee via optimized mass-production process and materials control.



Higher Power Output

Module power increases 5-25% generally, bringing significantly lower LCOE and higher IRR.



Enhanced Mechanical Load

Certified to withstand: wind load (2400 Pascal) and snow load (5400 Pascal).

ZHEJIANG AUSTA GREEN ENERGY TECHNOLOGY CO., LTD

www.austagroup.com

AUSTA ENERGY established in 2008, is a high-tech enterprise integrating R&D, production and sales of solar energy products. It is committed to the overall solution of distributed photovoltaic system and provides services from consulting, design, construction, financing to intelligent operation and maintenance.

AUSTA has 3 production sites in China and branches and representative offices in more than 10 countries overseas. Products include solar cells, modules, On/Off grid solar system, solar pump and other solar related applications. Our products have passed many international certifications such as TÜV, MCS, CEC, IEC, ISO, CE, CQC and so on. With excellent quality, our products are exported to more than 100 countries of the world.

Since its establishment, AUSTA has always followed the idea of "Smart energy, Lightening future". It has followed the steps of "the Belt and Road Initiative", we bring bright light to the countries and people who are short of electricity. Sharing the concept of modern civilization, and building a green home together.

ELECTRICAL DATA (STC)

Model Type	AU670-33V-MHD	AU675-33V-MHD	AU680-33V-MHD	AU685-33V-MHD	AU690-33V-MHD	AU695-33V-MHD	AU700-33V-MHD	AU705-33V-MHD
Peak Power(Pmax)	670.00	675.00	680.00	685.00	690.00	695.00	700.00	705.00
Maximum Power Voltage(Vmp)	39.52	39.72	39.92	40.12	40.32	40.52	40.72	40.92
Maximum Power Current(Imp)	16.96	17.00	17.04	17.08	17.12	17.16	17.20	17.23
Open Circuit Voltage(Voc)	47.42±3%	47.66±3%	47.90±3%	48.14±3%	48.38±3%	48.62±3%	48.86±3%	49.10±3%
Short Circuit Current(Isc)	17.72±3%	17.76±3%	17.80±3%	17.84±3%	17.88±3%	17.93±3%	17.97±3%	18.00±3%
Module Efficiency(%)	21.57	21.73	21.90	22.06	22.22	22.38	22.54	22.70

*STC:irradiance 1000W/m², AM1.5, and cell temperature of 25°C

ELECTRICAL DATA(BNPI)

Model Type	AU670-33V-MHD	AU675-33V-MHD	AU680-33V-MHD	AU685-33V-MHD	AU690-33V-MHD	AU695-33V-MHD	AU700-33V-MHD	AU705-33V-MHD
Peak Power(Pmax)	508.00	512.00	516.00	520.00	523.00	527.00	531.00	535.00
Maximum Power Voltage(Vmp)	37.18	37.37	37.55	37.74	37.93	38.12	38.31	38.50
Maximum Power Current(Imp)	13.65	13.68	13.71	13.74	13.78	13.81	13.84	13.87
Open Circuit Voltage(Voc)	44.81±3%	45.04±3%	45.27±3%	45.49±3%	45.72±3%	45.95±3%	46.17±3%	46.40±3%
Short Circuit Current(Isc)	14.12±3%	14.15±3%	14.18±3%	14.21±3%	14.25±3%	14.29±3%	14.32±3%	14.35±3%

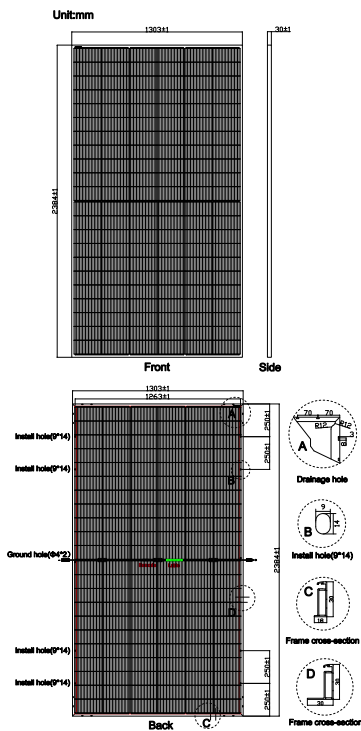
*NMOT: irradiance 800 W/m², AM 1.5, ambient temperature 20°C, wind speed 1 m/s

ELECTRICAL DATA(BNPI)

Model Type	AU670-33V-MHD	AU675-33V-MHD	AU680-33V-MHD	AU685-33V-MHD	AU690-33V-MHD	AU695-33V-MHD	AU700-33V-MHD	AU705-33V-MHD
Peak Power(Pmax)	742.00	748.00	753.00	759.00	765.00	770.00	776.00	781.00
Maximum Power Voltage(Vmp)	39.52	39.72	39.92	40.12	40.32	40.52	40.72	40.92
Maximum Power Current(Imp)	18.79	18.84	18.88	18.92	18.97	19.01	19.06	19.09
Open Circuit Voltage(Voc)	47.42±3%	47.66±3%	47.90±3%	48.14±3%	48.38±3%	48.62±3%	48.86±3%	49.10±3%
Short Circuit Current(Isc)	19.63±3%	19.68±3%	19.72±3%	19.77±3%	19.81±3%	19.87±3%	19.91±3%	19.94±3%

*BNPI:back irradiance 135W/m², AM1.5, and cell temperature of 25°C

PV DRAWINGS



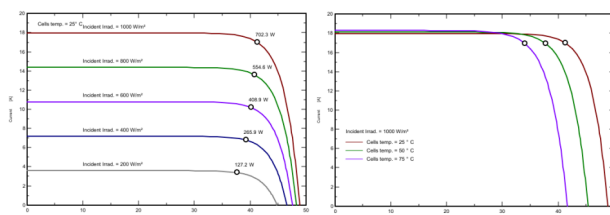
TEMPERATURE & MAXIMUM RATING

Maximum System Voltage (V)	1500 V
Maximum Series Fuse Rating (A)	30 A
Power Tolerance	0~+3 W
Pmax Temperature Coefficients (W/°C)	-0.240 %/°C
Voc Temperature Coefficients (V/°C)	-0.220 %/°C
Isc Temperature Coefficients (A/°C)	+0.047 %/°C
NMOT Nominal Module Operating Temperature (°C)	45±2 °C
Operating and Storage Temperature (°C)	-40~+85 °C

MECHANICAL CHARACTERISTICS

Cell Type	210*105 N Type Bifacial Mono
No. of Cells	132 (12*11)
Dimensions	2384*1303*30mm
Weight	39.20kg
Front Glass	2.0mm AR coating tempered glass
Backsheet	2.0mm Glazed Glass
Frame	Anodized Aluminium Alloy
Junction box	IP68 3diodes
Output cables	4mm ² cable 35cm (Including MC4 connector)
MaxWind Load/Snow Load	2400Pa/5400Pa

IV CURVE (700W)



PACKING WAY

40HQ container | 18 Packages/666pcs

Austa



We Are Seeking Agents And Partners!

ADD:Floor 1,Bulding 7, No.136,Haichuan Road, Jiangbei Area,Ningbo City,Zhejiang Province,P.R.China

Tel : 86-574-87915068

Call: 86-13566302808

E-mail : sales@austagroup.com

The company reserves the right of final interpretation, August 2022 edition